

# 2. Vane Pumps

Versions		Series	Max. Pressure (PSI)			Max. Displacement (in <sup>3</sup> /rev)			Weight lbs	Page
			P1	P2	P3	P1	P2	P3		
Medium Duty, Single		TB	2800			2.31			15	2 - 2
Industrial & Mobile	Single	T7B(S)	4600			3.05			51	2 - 8
		T6C	4100			6.10			35	
		T6D	3500			9.64			53	
		T6E	3500			16.41			95	
	Double	T7BB(S)	4600	4600		3.05	3.05			2 - 10
		T67CB	4100	4400		6.10	3.05		57	
		T6CC	4100	4100		6.10	6.10		57	
		T67DB	3500	4400		9.64	3.05		81	
		T6DC	3500	4100		9.64	6.10		81	
		T6DD(S)	3500	3500		9.64	9.64			
		T67EB	3500	4400		16.41	3.05		121	
		T6EC	3500	4100		16.41	6.10		121	
	Triple	T6ED	3500	3500		16.41	9.64		146	2 - 14
		T67DBB	3500	4400	4400	9.64	3.05	3.05	135	
		T67DCB	3500	4100	4400	9.64	6.10	3.05	135	
		T6DCC	3500	4100	4100	9.64	6.10	6.10	135	
		T67DDB(S)	3500	3500	4400	9.64	9.64	3.05	146	
		T6DDC(S)	3500	3500	4100	9.64	9.64	6.10	146	
		T67EDB(S)	3500	3500	4400	16.41	9.64	3.05	221	
	Single Rear Drive	T6EDC(S)	3500	3500	4100	16.41	9.64	6.10	221	2 - 18
		T6CR	4100			6.10			38	
		T6DR	3500			9.64			64	
	Double rear drive	T6ER	3500			16.41			86	2 - 20
		T6EE(S)	3500	3500		16.41	16.41		209	
Triple rear drive	T6DCCR	3500	4100	4100	9.64	6.10	6.10	137	2 - 22	
	T6EDCR	3500	3500	4100	16.41	9.64	6.10	221		
Hybrid	Double	T6H20B	4100	4400		2.61	3.05		82	2 - 24
		T6H20C	4100	4100		2.61	6.10		82	
		T6H29B	3000	4400		3.78	3.05		108	
		T6H29C	3000	4100		3.78	6.10		108	
		T6H29D	3000	4100		3.78	9.64		132	
Rear Drive Selection Table .....									2 - 29	
Porting Tables .....									2 - 30	

# Vane Pumps - Product Range Overview

Series		Displacement Range (in <sup>3</sup> /rev)																		
		0	1	2	3	4	5	6	7	8	9	10	11	12	13	14	15	16	17	18
T7B	P	0.3 3.05																		
T6C, T6CR	P	0.66 6.10																		
T6D, T6DR	P	2.90 9.64																		
T6E, T6ER	P	8.07 16.41																		
T7BB(S)	P1	0.3 3.05																		
	P2	0.3 3.05																		
T67CB	P1	0.66 6.10																		
	P2	0.3 3.05																		
T6CC	P1	0.66 6.10																		
	P2	0.66 6.10																		
T67DB	P1	2.90 9.64																		
	P2	0.3 3.05																		
T6DC	P1	2.90 9.64																		
	P2	0.66 6.10																		
T6DD	P1	2.90 9.64																		
	P2	2.90 9.64																		
T67EB	P1	8.07 16.41																		
	P2	0.3 3.05																		
T6EC	P1	8.07 16.41																		
	P2	0.66 6.10																		
T6ED	P1	8.07 16.41																		
	P2	2.90 9.64																		
T6EE	P1	8.07 16.41																		
	P2	8.07 16.41																		
T67DBB	P1	2.90 9.64																		
	P2	0.3 3.05																		
	P3	0.3 3.05																		
T67DCB	P1	2.90 9.64																		
	P2	0.66 6.10																		
	P3	0.3 3.05																		
T6DCC	P1	2.90 9.64																		
	P2	0.66 6.10																		
	P3	0.66 6.10																		
T67DDB(S)	P1	2.90 9.64																		
	P2	2.90 9.64																		
	P3	0.3 3.05																		
T6DDC(S)	P1	2.90 9.64																		
	P2	2.90 9.64																		
	P3	0.66 6.10																		
T67EDB(S)	P1	8.07 16.41																		
	P2	2.90 9.64																		
	P3	0.3 3.05																		
T6EDC(S)	P1	8.07 16.41																		
	P2	2.90 9.64																		
	P3	0.66 6.10																		

# Vane Pumps - Performance & Operation Limits, Mineral Oil

Cam	Size	in <sup>3</sup> / rev	Mineral Oil										Size									
			Antiwear petroleum base (HF-0, HF-2)																			
			Speed Range <sup>1</sup>	Maximum Outlet Pressure		Minimum inlet pressure (vs. rpm)																
				Int.	Cont.	1200	1500	1800	2100	2200	2300	2500		2800								
rpm	PSI	PSI	PSI (absolute)																			
B	B02	0.35	600...3600	4600	4200	11.6	11.6	11.6	11.6	11.6	11.6	11.6	11.6	11.6	11.6	B02						
	B03	0.60														B03						
	B04	0.78														B04						
	B05	0.97														B05						
	B06	1.21														B06						
	B07	1.37														B07						
	B08	1.52														B08						
	B10	1.94														B10						
	B12	2.50														B12						
	B15	3.05														B15						
C	003	0.66	600...2800	4100	3500	11.6	11.6	11.6	11.6	11.6	11.6	11.6	11.6	11.6	11.6	13.1	14.5	003				
	005	1.05																005				
	006	1.30																006				
	008	1.61																008				
	010	2.08																010				
	012	2.26																012				
	014	2.81																014				
	017	3.56																017				
	020	3.89																020				
	022	4.29																022				
	025	4.84																025				
	028	5.42																028				
	031	6.10																031				
D	014	2.90	600...2500	3500	3000	11.6	11.6	11.6	11.6	11.6	11.6	11.6	11.6	11.6	12.8	13.8	14.5	16.0	17.1	17.8	18.7	014
	017	3.55																				017
	020	4.03																				020
	024	4.85																				024
	028	5.47																				028
	031	6.00																				031
	035	6.77																				035
	038	7.34																				038
	042	8.30																				042
	045	8.89																				045
	050	9.64																				050
E	042	8.07	600...2200	3500	3000	11.6	11.6	11.6	13.1	14.5	-	-	-	-	-	-	-	-	-	-	-	042
	045	8.69																				045
	050	9.67																				050
	052	10.06																				052
	057	10.97																				057
	062	12.00																				062
	066	13.02																				066
	072	13.86																				072
	085	16.41																				085
			600...1800	1700	1200	14.5	14.5	14.5	-	-	-	-	-	-	-	-	-	-	-	-	-	

<sup>1</sup> For speed below 600 RPM, consult Denison Hydraulics.

Cam	Size	In <sup>3</sup> / rev	Fire Resistant Fluids Water-glycol (HF-4), Synthetic fluids (HF-5)					Size			
			Speed Range	Maximum Outlet Pressure		Minimum inlet pressure (vs. rpm)					
				Int.	Cont.	1200	1500		1800		
			rpm	PSI	PSI	PSI (absolute)					
<b>B</b>	B02	0.35	600...1800	3500	3000	14.5	14.5	14.5	B02		
	B03	0.60							B03		
	B04	0.78							B04		
	B05	0.97							B05		
	B06	1.21							B06		
	B07	1.37							B07		
	B08	1.52							B08		
	B10	1.94							B10		
	B12	2.50							B12		
	B15	3.05							B15		
<b>C</b>	003	0.66	600...1800	3000	2500	14.5	14.5	14.5	003		
	005	1.05							005		
	006	1.30							006		
	008	1.61							008		
	010	2.08							010		
	012	2.26							012		
	014	2.81							014		
	017	3.56							017		
	020	3.89							020		
	022	4.29							022		
	025	4.84							025		
	028	5.42			028						
031	6.10	2300	031								
<b>D</b>	014	2.90	600...1800	3000	2500	14.5	14.5	14.5	014		
	017	3.55							017		
	020	4.03							020		
	024	4.85							024		
	028	5.47							028		
	031	6.00							031		
	035	6.77							035		
	038	7.34							038		
	042	8.30							042		
	045	8.89			045						
050	9.64	2300	16.0	050							
<b>E</b>	042	8.07	600...1800	3000	2500	14.5	14.5	14.5	042		
	045	8.69							045		
	050	9.67							050		
	052	10.06							052		
	057	10.97							057		
	062	12.00							16.0	062	
	066	13.02							16.0	17.4	066
	072	13.86							16.0	18.1	18.1
	085	16.41			1700			1200	18.1	18.1	18.1

## Vane Pumps - Output Flow & Input Power

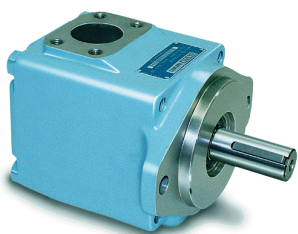
**Input Speed : 1200 rpm (Mineral oil, HF-0 / HF-2, 24 cSt)**

CAM	SIZE	In <sup>3</sup> / rev	Output Flow (GPM)							Input Power (HP)							SIZE
			0 PSI	1000 PSI	2000 PSI	3000 PSI	3500 PSI	4100 PSI	4600 PSI	0 PSI	1000 PSI	2000 PSI	3000 PSI	3500 PSI	4100 PSI	4600 PSI	
B	B02	0.35	1.9	1.6	1.4	1.2	1.1			0.5	1.7	3.0	4.3	4.8			B02
	B03	0.60	3.1	2.9	2.7	2.5	2.3	2.2	2.1	0.5	2.4	4.4	6.6	7.4	8.6	9.8	B03
	B04	0.78	4.1	3.8	3.7	3.4	3.3	3.1	3.0	0.7	3.0	5.6	8.2	9.3	10.9	12.3	B04
	B05	0.97	5.1	4.8	4.6	4.4	4.3	4.1	4.0	0.7	3.6	6.7	9.9	11.3	13.1	15.0	B05
	B06	1.21	6.3	6.1	5.9	5.6	5.5	5.4	5.2	0.8	4.3	8.2	12.2	13.8	16.1	18.4	B06
	B07	1.37	7.1	6.9	6.7	6.5	6.3	6.2	6.1	0.5	4.6	8.9	13.3	15.3	17.8	20.4	B07
	B08	1.52	7.9	7.7	7.5	7.2	7.1	7.0	6.8	0.8	5.2	10.2	15.0	17.2	19.9	22.7	B08
	B10	1.94	10.1	9.9	9.7	9.4	9.3	9.2	9.0	0.9	6.6	12.7	18.9	21.6	25.1	28.7	B10
	B12	2.50	13.0	12.8	12.6	12.3	12.2	12.1		1.2	8.3	16.2	24.1	27.5	32.1		B12
	B15	3.05	15.9	15.6	15.4	15.2	15.1	14.9		1.3	9.9	19.6	29.1	33.3	38.8		B15
C	003	0.66	3.4	2.8	2.1					1.5	3.5	5.9					003
	005	1.05	5.4	4.8	4.1	3.5	3.3	3.0		1.5	4.7	8.3	11.8	13.4	15.4		005
	006	1.30	6.8	6.1	5.4	4.8	4.7	4.4		1.6	5.5	9.8	14.1	16.0	18.5		006
	008	1.61	8.4	7.7	7.1	6.4	6.3	6.0		1.7	6.4	11.7	17.0	19.3	22.3		008
	010	2.08	10.8	10.2	9.5	8.8	8.7	8.4		1.9	7.9	14.6	21.3	24.3	28.0		010
	012	2.26	11.8	11.1	10.4	9.8	9.6	9.4		1.9	8.5	15.7	23.1	26.2	30.3		012
	014	2.81	14.6	13.9	13.3	12.6	12.5	12.2		2.0	10.2	19.0	28.0	31.9	37.0		014
	017	3.56	18.5	17.8	17.2	16.5	16.4	16.1		2.3	12.5	23.7	35.0	39.8	46.3		017
	020	3.89	20.2	19.6	18.9	18.3	18.1	17.8		2.4	13.4	25.8	38.1	43.3	50.4		020
	022	4.29	22.3	21.6	21.0	20.3	20.2	19.9		2.6	14.8	28.2	41.7	47.6	55.3		022
	025	4.84	25.2	24.5	23.8	23.2	23.0	22.8		2.7	16.4	31.7	46.8	53.4	62.1		025
028	5.42	28.2	27.5	26.8	26.2				2.8	18.1	35.1	52.2				028	
031	6.10	31.7	31.0	30.4	29.7				3.1	20.3	39.4	58.5				031	
D	014	2.90	15.1	14.0	12.7	11.7	11.1			2.4	10.7	20.0	29.2	33.3			014
	017	3.55	18.4	17.4	16.1	15.0	14.5			2.6	12.7	24.0	35.3	40.1			017
	020	4.03	20.9	19.9	18.6	17.5	17.0			2.8	14.2	27.0	39.7	45.1			020
	024	4.85	25.2	24.2	22.8	21.8	21.2			3.0	16.8	32.1	47.2	53.8			024
	028	5.47	28.4	27.4	26.1	25.0	24.5			3.2	18.6	35.8	53.0	60.4			028
	031	6.00	31.2	30.1	28.8	27.7	27.2			3.4	20.3	39.0	57.8	65.8			031
	035	6.77	35.2	34.1	32.8	31.8	31.2			3.6	22.7	43.9	65.0	74.0			035
	038	7.34	38.2	37.1	35.8	34.7	34.2			3.8	24.4	47.3	70.3	80.1			038
	042	8.30	43.1	42.1	40.7	39.7	39.2			4.0	27.4	53.2	79.1	90.1			042
	045	8.89	46.2	45.1	43.8	42.8	42.2			4.3	29.1	56.9	84.5	96.4			045
050	9.64	50.1	49.0	47.7	46.7				4.4	31.5	61.4	91.5				050	
E	042	8.07	42.0	40.6	39.3	38.0	37.5			5.4	27.9	53.0	78.2	88.9			042
	045	8.69	45.2	43.8	42.5	41.2	40.7			5.5	29.8	56.9	83.8	95.5			045
	050	9.67	50.3	48.9	47.6	46.3	45.8			5.8	32.9	62.9	92.9	105.8			050
	052	10.06	52.3	50.9	49.6	48.3	47.8			5.9	34.1	65.2	96.4	109.8			052
	057	10.97	57.0	55.7	54.4	53.1	52.5			6.2	36.9	70.8	104.9	119.5			057
	062	12.00	62.4	61.0	59.7	58.4	57.9			6.6	40.0	77.2	114.4	130.4			062
	066	13.02	67.6	66.3	65.0	63.7	63.1			6.8	43.2	83.4	123.8	141.1			066
	072	13.86	72.0	70.7	69.4	68.0	67.5			7.1	45.7	88.6	131.6	149.9			072
	085	16.41	85.3	84.0						7.9	53.6						085

## Vane Pumps - Output Flow & Input Power

**Input Speed : 1800 rpm (Mineral oil, HF-0 / HF-2, 24 cSt)**

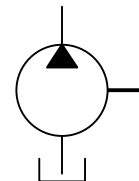
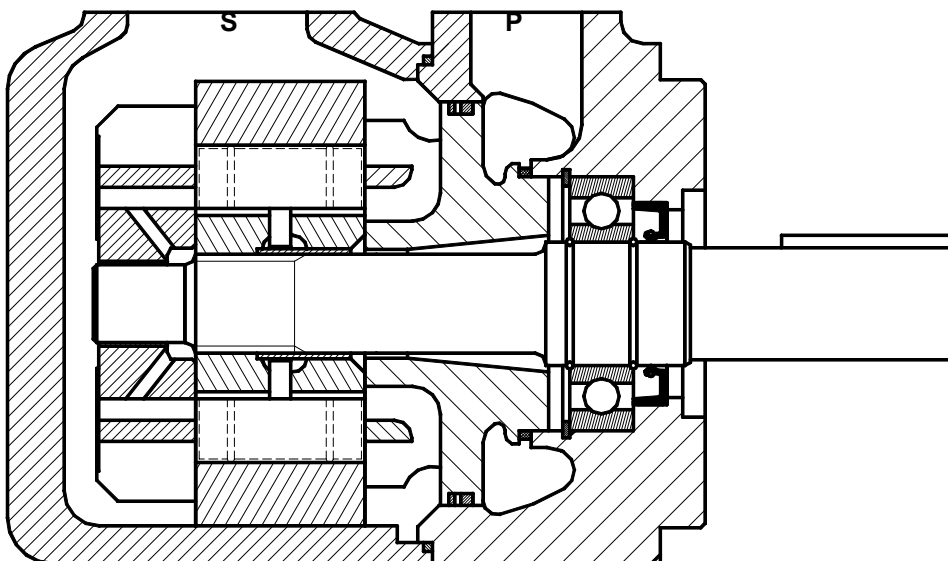
CAM	SIZE	In <sup>3</sup> / rev	Output Flow (GPM)							Input Power (HP)							SIZE
			0 PSI	1000 PSI	2000 PSI	3000 PSI	3500 PSI	4100 PSI	4600 PSI	0 PSI	1000 PSI	2000 PSI	3000 PSI	3500 PSI	4100 PSI	4600 PSI	
B	B02	0.35	2.8	2.5	2.3	2.1	2.0	1.8	1.7	0.9	2.7	4.6	6.7	7.5	8.6	9.7	B02
	B03	0.60	4.7	4.4	4.2	4.0	3.9	3.7	3.6	1.1	3.8	6.8	10.1	11.4	13.0	14.8	B03
	B04	0.78	6.1	5.8	5.7	5.4	5.3	5.2	5.0	1.2	4.6	8.6	12.6	14.2	16.5	18.6	B04
	B05	0.97	7.6	7.3	7.1	6.9	6.8	6.6	6.5	1.2	5.5	10.3	15.2	17.2	20.0	22.7	B05
	B06	1.21	9.4	9.2	9.0	8.8	8.6	8.5	8.4	1.3	6.6	12.5	18.5	21.1	24.3	27.6	B06
	B07	1.37	10.7	10.5	10.3	10.0	9.9	9.8	9.6	0.8	6.6	13.1	19.6	22.5	27.4	30.0	B07
	B08	1.52	11.8	11.6	11.4	11.2	11.0	10.9	10.8	1.5	8.1	15.4	22.8	25.9	30.0	34.2	B08
	B10	1.94	15.1	14.9	14.7	14.5	14.3	14.2	14.1	1.7	9.9	19.3	28.6	32.6	37.8	43.1	B10
	B12	2.50	19.5	19.3	19.1	18.8	18.7	18.6		2.0	12.6	24.4	36.3	41.4	48.1		B12
	B15	3.05	23.8	23.5	23.4	23.1	23.0	22.9		2.3	15.2	29.5	44.0	50.2	58.3		B15
C	003	0.66	5.1	4.5	3.8	3.1	3.0	2.7		2.3	5.4	8.6	11.9	13.4	15.4		003
	005	1.05	8.2	7.5	6.9	6.2	6.1	5.8		2.6	7.1	12.2	17.4	19.6	22.5		005
	006	1.30	10.1	9.5	8.8	8.1	8.0	7.7		2.6	8.3	14.5	20.9	23.6	27.2		006
	008	1.61	12.6	11.9	11.2	10.6	10.4	10.2		2.8	9.7	17.4	25.2	28.6	33.0		008
	010	2.08	16.2	15.6	14.9	14.2	14.1	13.8		3.0	11.9	21.7	31.7	35.9	41.6		010
	012	2.26	17.7	17.0	16.3	15.7	15.5	15.2		3.1	12.7	23.5	34.2	38.9	45.1		012
	014	2.81	21.9	21.2	20.6	19.9	19.8	19.5		3.4	15.3	28.4	41.7	47.5	55.0		014
	017	3.56	27.7	27.1	26.4	25.7	25.6	25.3		3.6	18.6	35.4	52.2	59.3	68.9		017
	020	3.89	30.3	29.7	29.0	28.4	28.2	27.9		3.8	20.3	38.5	56.7	64.6	75.1		020
	022	4.29	33.4	32.8	32.1	31.4	31.3	31.0		4.0	22.1	42.1	62.2	70.9	82.5		022
	025	4.84	37.7	37.0	36.4	35.7	35.6	35.3		4.3	24.7	47.2	69.9	79.5	92.5		025
028	5.42	42.2	41.6	40.9	40.2				4.6	27.2	52.6	77.9				028	
031	6.10	47.6	46.9	46.2	45.6				4.8	30.4	58.9	87.3				031	
D	014	2.90	22.6	21.6	20.3	19.2	18.7			3.9	16.2	29.9	43.6	49.5			014
	017	3.55	27.7	26.6	25.3	24.3	23.7			4.2	19.3	35.9	52.6	59.7			017
	020	4.03	31.4	30.3	29.0	28.0	27.4			4.4	21.5	40.4	59.1	67.2			020
	024	4.85	37.8	36.8	35.4	34.4	33.8			4.8	25.2	47.9	70.5	80.3			024
	028	5.47	42.7	41.6	40.3	39.2	38.7			5.1	28.2	53.6	79.1	90.1			028
	031	6.00	46.7	45.7	44.4	43.3	42.8			5.4	30.6	58.5	86.5	98.4			031
	035	6.77	52.8	51.7	50.4	49.4	48.8			5.6	34.1	65.7	97.2	110.6			035
	038	7.34	57.2	56.1	54.8	53.8	53.2			5.9	36.7	70.9	105.0	119.6			038
	042	8.30	64.7	63.6	62.3	61.2	60.7			6.4	41.2	79.8	118.3	134.8			042
	045	8.89	69.3	68.2	66.9	65.9	65.3			6.7	43.9	85.2	126.5	144.2			045
050	9.64	75.1	74.1	72.8	71.7				7.0	47.3	92.1	136.9				050	
E	042	8.07	62.9	61.6	60.3	58.9	58.4			8.6	42.2	79.7	117.1	133.3			042
	045	8.69	67.7	66.4	65.1	63.8	63.2			8.9	45.1	85.4	125.7	143.0			045
	050	9.67	75.4	74.1	72.7	71.4	70.9			9.3	49.6	94.4	139.3	158.5			050
	052	10.06	78.4	77.0	75.7	74.4	73.9			9.5	51.4	98.0	144.6	164.7			052
	057	10.97	85.5	84.2	82.9	81.5	81.0			9.9	55.7	106.5	157.3	179.2			057
	062	12.00	93.6	92.2	90.9	89.6	89.1			10.3	60.4	116.0	171.5	195.4			062
	066	13.02	101.4	100.1	98.8	97.5	96.9			10.9	65.0	125.3	185.6	211.5			066
	072	13.86	108.0	106.7	105.4	104.0	103.5			11.3	68.9	133.0	197.3	224.8			072
	085	16.41	127.9	126.6						12.3	80.7						085



(T6C)

## Single Pumps

T7B(S), T6C, T6D, T6E Series



**Key sheet** .....

Examples : **T7BS-B10-1R00-A100** - **T6C-025-1R00-C1**

1. **T7BS-B10-1R00-A100**..... Series

SAE Mounting	<b>T7BS</b>	<b>T6C</b>	<b>T6D</b>	<b>T6E</b>
Metric Mounting	<b>T7B</b>	-	-	-

2. **T7BS-B10-1R00-A100**..... Cam size

B	C	D	E
<b>B02</b> ..... 0.35	<b>003</b> ..... 0.66	<b>014</b> ..... 2.90	<b>042</b> ..... 8.07
<b>B03</b> ..... 0.60	<b>005</b> ..... 1.05	<b>017</b> ..... 3.55	<b>045</b> ..... 8.69
<b>B04</b> ..... 0.78	<b>006</b> ..... 1.30	<b>020</b> ..... 4.03	<b>050</b> ..... 9.67
<b>B05</b> ..... 0.97	<b>008</b> ..... 1.61	<b>024</b> ..... 4.85	<b>052</b> ..... 10.06
<b>B06</b> ..... 1.21	<b>010</b> ..... 2.08	<b>028</b> ..... 5.47	<b>057</b> ..... 10.97
<b>B07</b> ..... 1.37	<b>012</b> ..... 2.26	<b>031</b> ..... 6.00	<b>062</b> ..... 12.00
<b>B08</b> ..... 1.52	<b>014</b> ..... 2.81	<b>035</b> ..... 6.77	<b>066</b> ..... 13.02
<b>B10</b> ..... 1.94	<b>017</b> ..... 3.56	<b>038</b> ..... 7.34	<b>072</b> ..... 13.86
<b>B12</b> ..... 2.50	<b>020</b> ..... 3.89	<b>042</b> ..... 8.30	<b>085</b> ..... 16.41
<b>B15</b> ..... 3.05	<b>022</b> ..... 4.29	<b>045</b> ..... 8.89	
	<b>025</b> ..... 4.84	<b>050</b> ..... 9.64	
	<b>028</b> ..... 5.42		
	<b>031</b> ..... 6.10		

3. **T7BS-B10-1R00-A100**..... Shaft

4. **T7BS-B10-1R00-A100**..... Rotation

CW	<b>R</b>
CCW	<b>L</b>

5. **T7BS-B10-1R00-A100**..... Porting

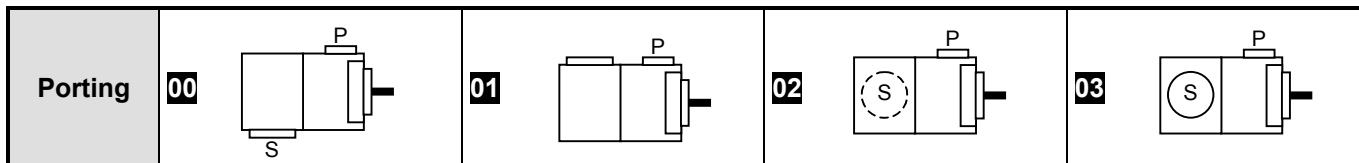
6. **T7BS-B10-1R00-A100**..... Design

7. **T7BS-B10-1R00-A100**..... Seal Class

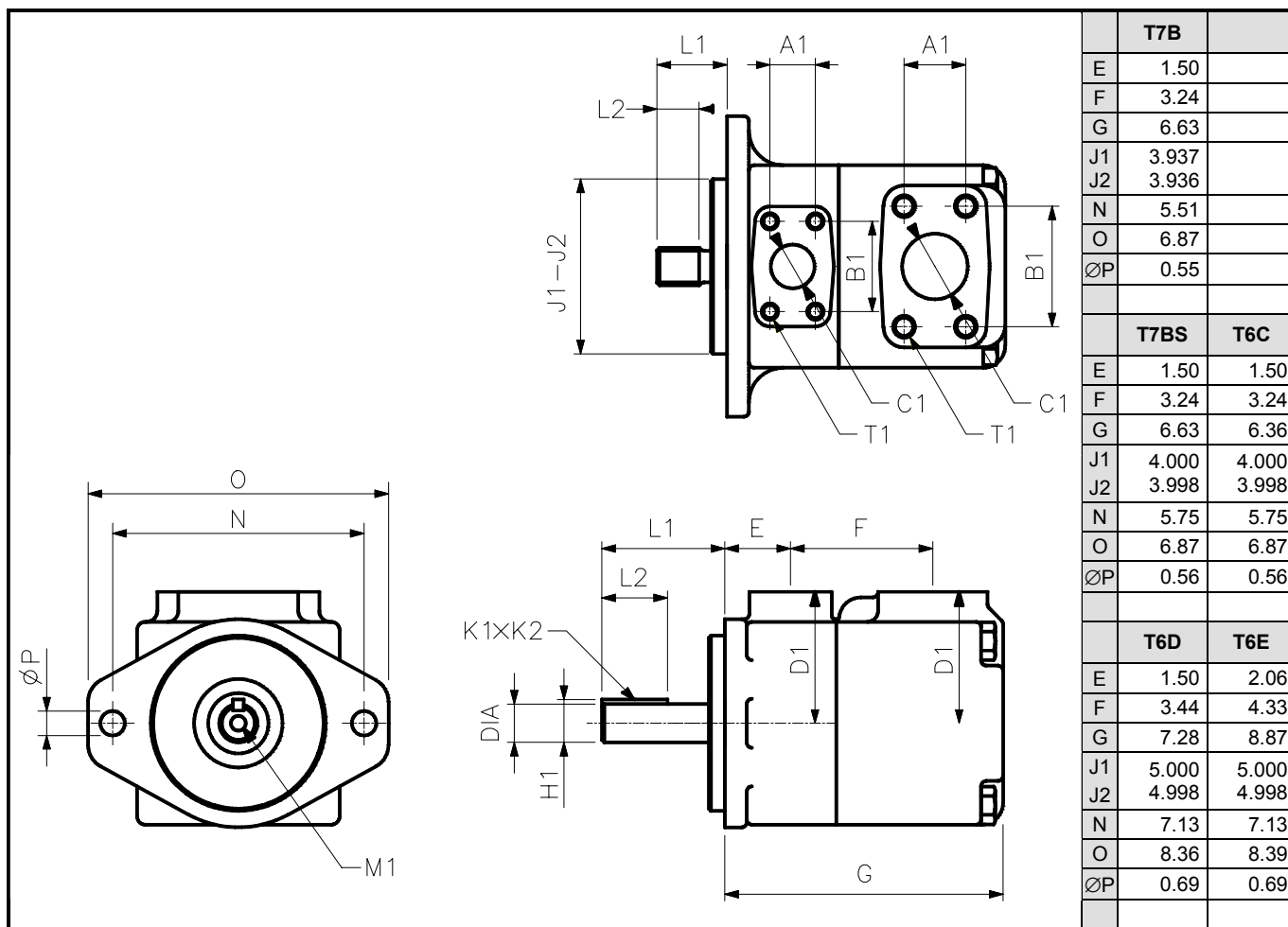
Buna N : mineral oil	<b>1</b>
Viton : mineral oil & fire resistant fluid	<b>5</b>

8. **T7BS-B10-1R00-A100**..... Connections

<b>T7B / T7BS only</b>	P = 3/4"	P = 1"
T7BS : UNC threads	<b>01</b>	<b>00</b>
T7B : Metric threads	<b>M1</b>	<b>M0</b>

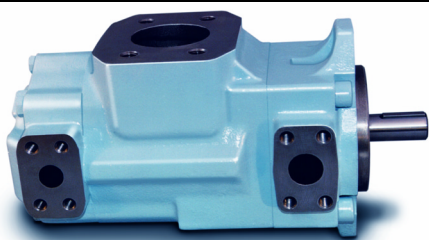


# Vane Pumps - Single Pumps



	Shafts	Torque Limits (in-lbs.)					Dimensions (in)					
		T7B	T7BS	T6C	T6D	T6E	L1	L2	DIA	K1 x K2	H1	M1
1	Key : SAE B		●	2430			2.81	1.50	0.8750 - 0.8748	0.250 x 0.248	0.98	M8 x 0.63
	Key : SAE C				●		3.29	1.94	1.2500 - 1.248	0.313 x 0.311	1.39	M10 x 0.79
	Key : SAE CC					●	3.58	2.00	1.500 - 1.498	0.375 x 0.373	1.67	M10 x 0.79
2	Key : Non SAE			2110			2.29	1.25	22.225 - 22.200	0.187x0.185	24.53	-
	Key : ISO R775	●					2.76	1.57	24.9935-25.0065	8.00 x 7.00	28.22	-
	Key : Non SAE				5110		2.88	1.50	31.750 - 31.700	0.313x0.311	35.27	-
	Key : Non SAE					5110	2.44	1.50	31.750 - 31.700	0.313x0.311	35.27	-
3	Spline : SAE B		●	3040			1.60	0.96	Class 1-J498b, 16/32 d.p. - 13 teeth			
	Spline : SAE C				●	●	2.17	1.50	Class 1-J498b, 12/24 d.p. - 14 teeth			
4	Spline : SAE BB		●	●			1.79	0.96	Class 1-J498b, 16/32 d.p. - 15 teeth			
	Spline : Non SAE				●		3.06	1.89	Class 1-J498b, 12/24 d.p. - 14 teeth			
	Spline : SAE CC					●	2.45	1.24	Class 1-J498b, 12/24 d.p. - 17 teeth			

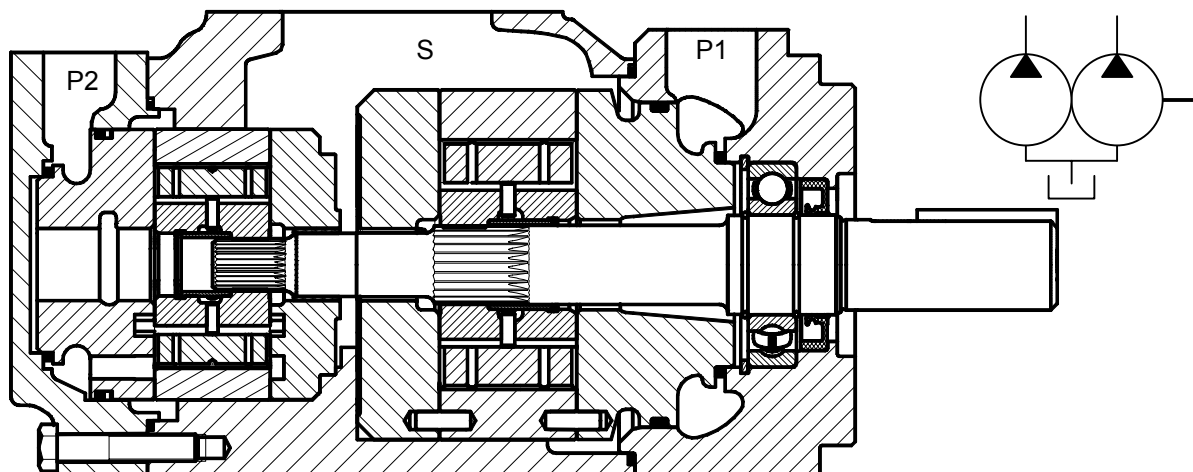
	Ports		Dimensions (in)				
			A1	B1	C1	D1	Threads T1
T7BS	P	01 : 3/4"	0.87	1.88	0.75	3.00	3/8"-16UNC x 0.75
		00 : 1"	1.03	2.06	1.00		
T7B	S	1 1/2"	1.41	2.76	1.50	3.00	1/2"-13UNC x 0.88
		M1 : 3/4"	0.87	1.88	0.75		
T6C	P	M0 : 1"	1.03	2.06	1.00	3.00	M10 x 0.75
		1"	1.41	2.76	1.50		
T6D	S	1 1/4"	1.19	2.31	1.25	3.25	7/16"-14UNC x 0.88
		2"	1.69	3.06	2.00		
T6E	P	1 1/2"	1.41	2.75	1.50	3.88	1/2"-13UNC x 0.94
		3"	2.44	4.19	3.00		
	S				3.88	5/8"-11UNC x 0.94	



(T6CC)

## Double Pumps

T7BB(S), T67CB, T6CC Series  
 T67DB, T6DC, T6DD(S) Series  
 T67EB, T6EC, T6ED, T6EE(S) Series



Key sheet ..... Examples : T6CC-025-020-1R00-C100 - T6DC-045-014-2R00-C1

1. **T6CC-025-020-1R00-C100** ..... Series

SAE Mounting	T7BBS	T67CB T67CBW <sup>1</sup>	T6CC T6CCW <sup>1</sup>	
	T67DB T67DBW <sup>2</sup>	T6DC T6DCW <sup>2</sup>	T6DDS	
	T67EB	T6EC	T6ED	T6EE <sup>3</sup>
Metric Mounting	T7BB	T6EE <sup>3</sup>		

<sup>1</sup> T67CBW, T6CCW : heavy duty shaft #2  
<sup>2</sup> T67DBW, T6DCW : heavy duty shaft #5  
<sup>3</sup> T6EE / T6EES : see "Double Rear Drive" section (p. 2-20)

2. **T6CC-025-020-1R00-C100** ..... Cam size

B	C	D	E
B02 ..... 0.35	003 ..... 0.66	014 ..... 2.90	042 ..... 8.07
B03 ..... 0.60	005 ..... 1.05	017 ..... 3.55	045 ..... 8.69
B04 ..... 0.78	006 ..... 1.30	020 ..... 4.03	050 ..... 9.67
B05 ..... 0.97	008 ..... 1.61	024 ..... 4.85	052 ..... 10.06
B06 ..... 1.21	010 ..... 2.08	028 ..... 5.47	057 ..... 10.97
B07 ..... 1.37	012 ..... 2.26	031 ..... 6.00	062 ..... 12.00
B08 ..... 1.52	014 ..... 2.81	035 ..... 6.77	066 ..... 13.02
B10 ..... 1.94	017 ..... 3.56	038 ..... 7.34	072 ..... 13.86
B12 ..... 2.50	020 ..... 3.89	042 ..... 8.30	085 ..... 16.41
B15 ..... 3.05	022 ..... 4.29	045 ..... 8.89	
	025 ..... 4.84	050 ..... 9.64	
	028 ..... 5.42		
	031 ..... 6.10		

3. **T6CC-025-020-1R00-C100** ..... Shaft

4. **T6CC-025-020-1R00-C100** ..... Rotation

CW	R
CCW	L

5. **T6CC-025-020-1R00-C100** ..... Porting

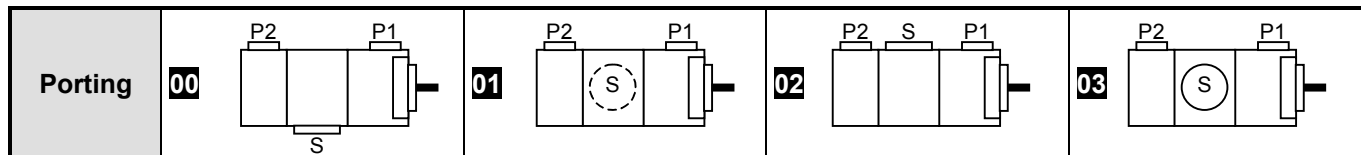
6. **T6CC-025-020-1R00-C100** ..... Design

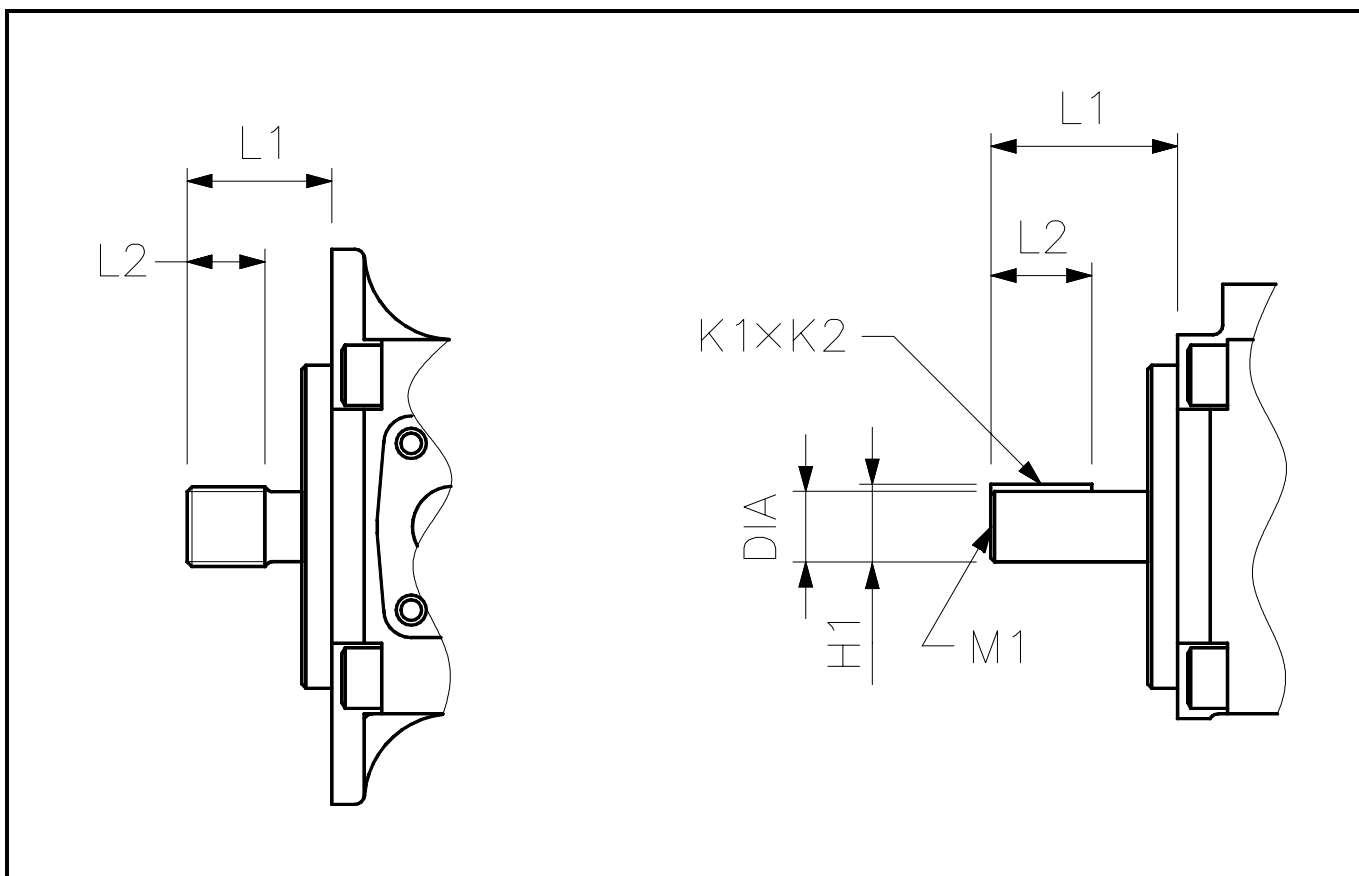
7. **T6CC-025-020-1R00-C100** ..... Seal Class

Buna N : mineral oil	1
Viton : mineral oil & fire resistant fluid	5

8. **T6CC-025-020-1R00-C100** ..... Connections

P1 & P2 threads	Metric			UNC			
	P2 size	3/4"	1"	1 1/4"	3/4"	1"	1 1/4"
T7BB	M1	M0		-	-		
T7BBS	M1	M0		01	00		
T6CC	-	-		01	00		
T67CB, T67DB, T67EB	M1	-		01	-		
T6DDS	-	-	M0	-	-	00	
T6DC, T6EC, T6ED, T6EE, T6EES	No option						



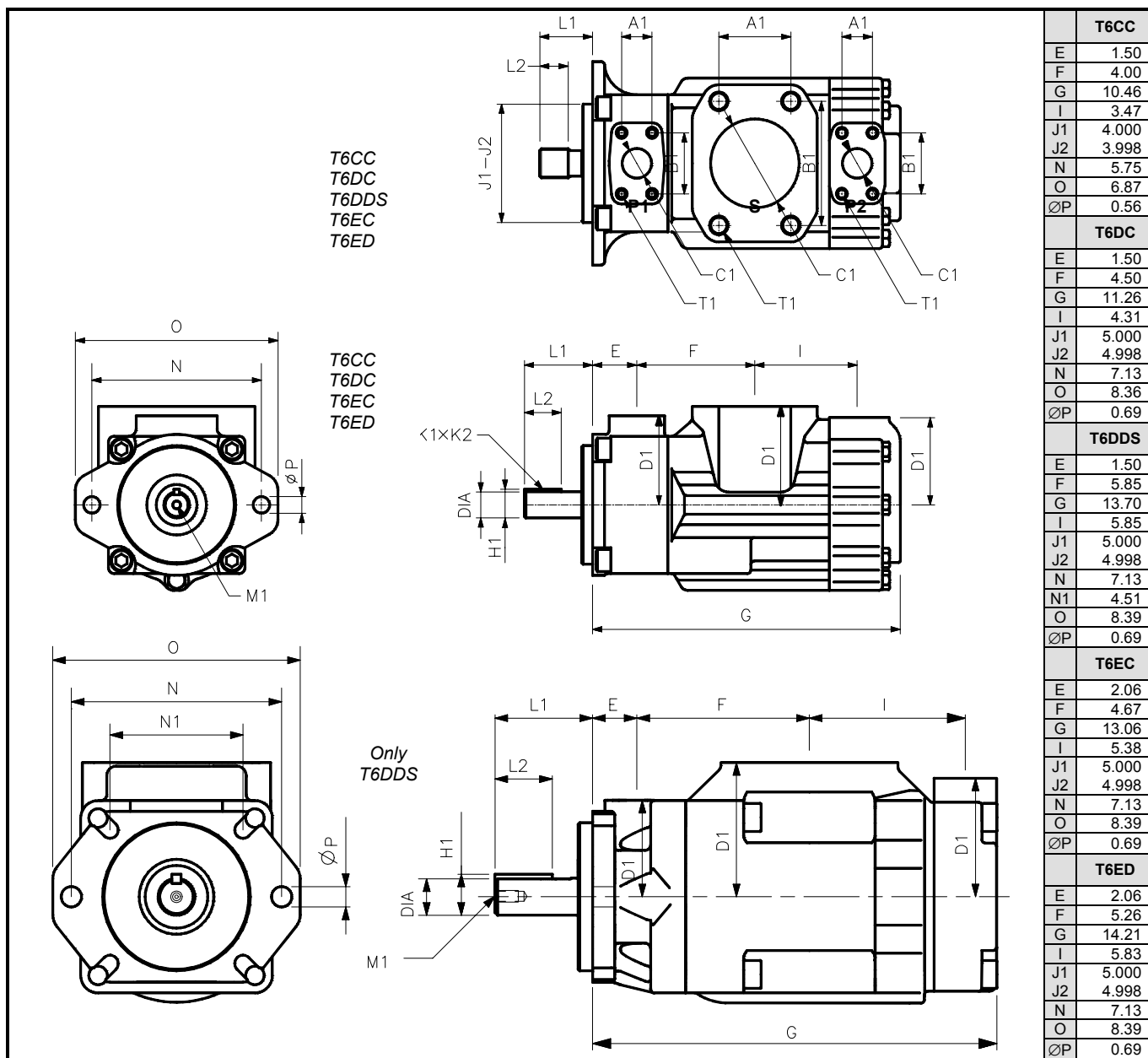


Shafts	Torque Limits (in-lbs.)						Dimensions (in)					
	T7BB	T7BBS	T67CB T6CC	T67DB T6DC	T6DDS	T67EB T6EC T6ED	L1	L2	DIA	K1 x K2	H1	M1
1	Key : Non SAE		2110	2110			2.29	1.25	0.8750 - 0.8740	0.187x0.185	0.97	
	Key : SAE C				6380	6070	3.29	1.94	1.2500 - 1.2480	0.313x0.311	1.39	M10 x 0.78
	Key : SAE CC						3.58	2.00	1.5000 - 1.4980	0.375x0.373	1.67	M10 x 0.78
2	Key : SAE BB		3160	3160 <sup>1</sup>			2.81	1.50	1.0000 - 0.9988	0.250x0.248	1.11	M8 x 0.63
	Key : Non SAE				5110		2.88	1.50	1.2500 - 1.2480	0.313x0.311	1.39	
	Key : SAE-CC						3.58	2.00	1.5000 - 1.4980	0.375x0.373	1.67	M10 x 0.78
	Key : Non SAE					5110	2.44	1.50	1.2500 - 1.2480	0.313x0.311	1.39	
3	Spline : SAE B		●				1.60	0.96	Class 1-J498b, 16/32 d.p. - 13 teeth			
	Spline : SAE BB			4820			1.79	0.96	Class 1-J498b, 16/32 d.p. - 15 teeth			
	Spline : SAE C				●	8590	2.19	1.50	Class 1-J498b, 12/24 d.p. - 14 teeth			
4	Spline : SAE BB		●				1.80	0.96	Class 1-J498b, 16/32 d.p. - 15 teeth			
	Spline : Non SAE				●		3.06	1.89	Class 1-J498b, 12/24 d.p. - 14 teeth			
	Spline : SAE BB					5050	1.81	1.24	Class 1-J498b, 16/32 d.p. - 15 teeth			
	Spline : SAE CC						2.45	1.24	Class 1-J498b, 12/24 d.p. - 17 teeth			
5	Splined : SAE B			3040			1.60	0.96	Class 1-J498b, 16/32 d.p. - 13 teeth			
	Key : Non SAE				● <sup>2</sup>	7820	3.28	2.36	1.3740 - 1.3730	0.313x0.311	1.51	M8 x 0.63
	Key : ISO	●					2.76	1.57	0.9845 - 0.9840	0.315x0.313	1.11	
R	Key		2670 <sup>1</sup>				1.92	1.25	1.0000 - 0.9988	0.250x0.248	1.11	M8 x 0.63
V	Key		4820 <sup>1</sup>				3.50	1.97	1.2598 - 1.2583	0.394x0.393	1.39	M12 x 0.94
X	Key		3740 <sup>1</sup>				2.52	1.94	1.0610 - 1.0598	0.250x0.248	1.18	M8 x 0.63
W	Key		4820 <sup>1</sup>				2.19	1.50	1.2500 - 1.2480	0.313x0.311	1.39	M8 x 0.63

<sup>1</sup> T67CBW, T6CCW

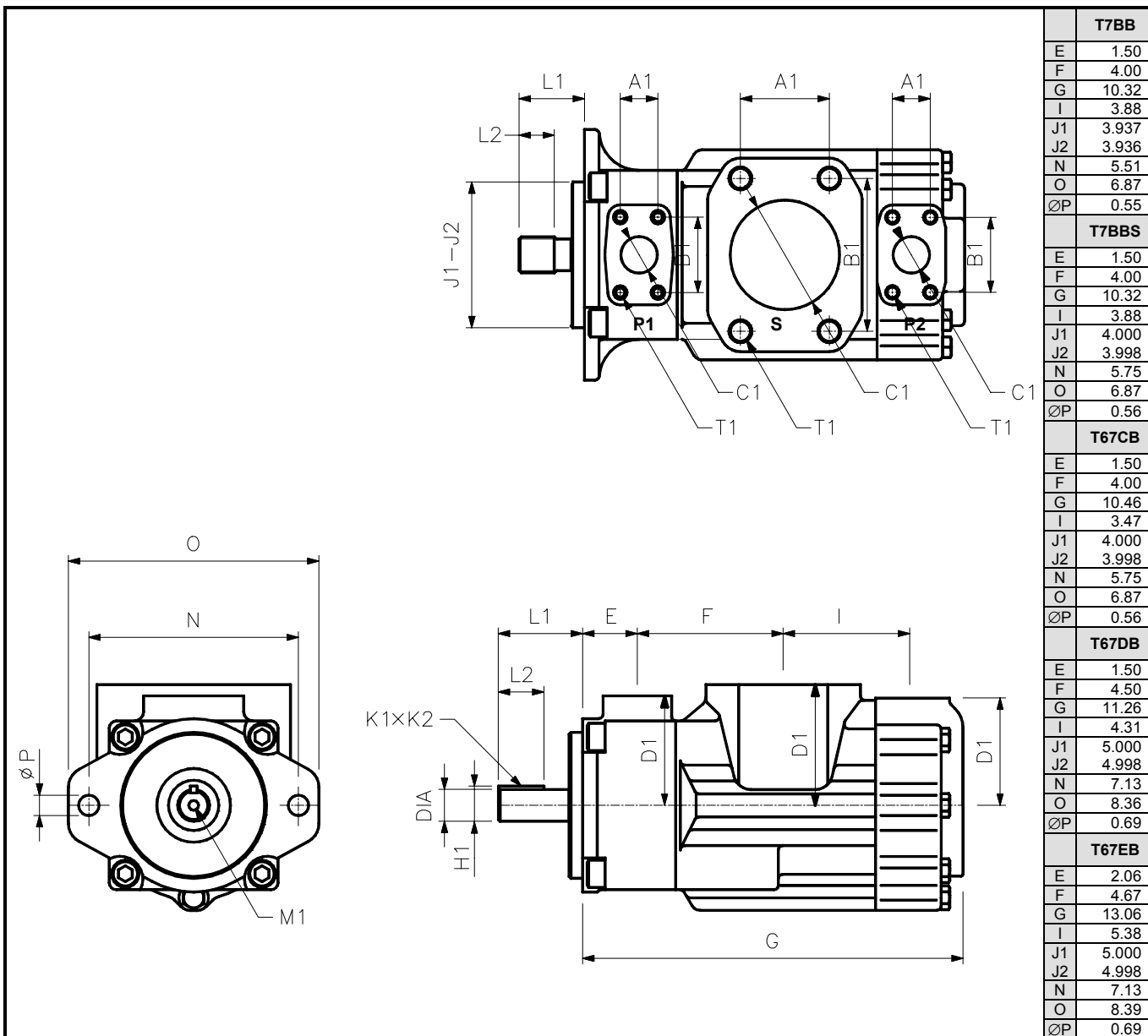
<sup>2</sup> T67DBW, T6DCW

# Vane Pumps - Double Pumps



Ports			Dimensions (in)				Threads T1	
			A1	B1	C1	D1	Metric	UNC
<b>T6CC</b>	P1	1"	1.03	2.06	1.00	3.00		$\frac{3}{8}$ "-16UNC x 0.75
	P2	01-11 : $\frac{3}{4}$ "	0.87	1.88	0.75	3.00		$\frac{3}{8}$ "-16UNC x 0.75
		00-10 : 1"	1.03	2.06	1.00	2.94		
S	10-11 : 2 $\frac{1}{2}$ "	2.00	3.50	2.50	3.31		$\frac{1}{2}$ "-13UNC x 0.94	
	00-01 : 3"	2.44	4.19	3.00			$\frac{5}{8}$ "-11UNC x 1.12	
<b>T6DC</b>	P1	1 $\frac{1}{4}$ "	1.19	2.31	1.25	3.25		$\frac{1}{16}$ "-14UNC x 0.88
	P2	1"	1.03	2.06	0.98	2.94		$\frac{3}{8}$ "-16UNC x 0.75
	S	3"	2.44	4.19	2.99	3.50		$\frac{5}{8}$ "-11UNC x 1.12
<b>T6DDS</b>	P1	1 $\frac{1}{4}$ "	1.19	2.31	1.25	3.25	M12 x 0.88	$\frac{1}{16}$ "-14UNC x 0.88
	P2	1 $\frac{1}{4}$ "	1.19	2.31	1.25	4.00	M12 x 0.94	$\frac{1}{16}$ "-14UNC x 0.94
	S	4"	3.06	5.13	4.00	4.53	M16 x 1.18	$\frac{5}{8}$ "-11UNC x 1.18
<b>T6EC</b>	P1	1 $\frac{1}{2}$ "	1.41	2.75	1.46	3.87		$\frac{1}{2}$ "-13UNC x 0.92
	P2	1"	1.03	2.06	0.98	2.94		$\frac{3}{8}$ "-16UNC x 0.75
	S	3 $\frac{1}{2}$ "	2.75	4.75	3.50	4.03		$\frac{5}{8}$ "-11UNC x 1.16
<b>T6ED</b>	P1	1 $\frac{1}{2}$ "	1.41	2.75	1.46	3.87		$\frac{1}{2}$ "-13UNC x 0.92
	P2	1 $\frac{1}{4}$ "	1.19	2.31	1.16	4.00		$\frac{1}{16}$ "-14UNC x 0.94
	S	4"	3.06	5.13	4.00	4.03		$\frac{5}{8}$ "-11UNC x 1.18

# Vane Pumps - Double Pumps



Ports			Dimensions (in)					Threads T1	
			A1	B1	C1	D1	Threads T1		
							Metric	UNC	
T7BB T7BBS	P1	◆ 1:3/4" ◆ 0: 1"	0.87 1.03	1.87 2.06	0.75 1.00	2.94	M10 x 0.75	3/8"-16UNC x 0.75	
	P2	3/4"	0.87	1.87	0.75	2.94	M10 x 0.75	3/8"-16UNC x 0.75	
	S	2 1/2"	2.00	3.50	2.50	3.31	M12 x 0.88	1/2"-13UNC x 0.88	
T67CB	P1	1"	1.03	2.06	1.00	3.00	M10 x 0.75	3/8"-16UNC x 0.75	
	P2	3/4"	0.87	1.88	0.75	3.00	M10 x 0.75	3/8"-16UNC x 0.75	
	S	2 1/2"	2.00	3.50	2.50	3.31	M12 x 1.18	1/2"-13UNC x 0.94	
T67DB	P1	1 1/4"	1.19	2.31	1.25	3.25	M12 x 0.88	7/16"-14UNC x 0.88	
	P2	3/4"	0.87	1.88	0.75	2.94	M10 x 0.75	3/8"-16UNC x 0.75	
	S	3"	2.44	4.19	2.99	3.50	M16 x 1.12	5/8"-11UNC x 1.12	
T67EB	P1	1 1/2"	1.41	2.75	1.46	3.87	M12 x 0.93	1/2"-13UNC x 0.92	
	P2	3/4"	0.87	1.88	0.75	2.94	M10 x 0.75	3/8"-16UNC x 0.75	
	S	3 1/2"	2.75	4.75	3.50	4.03	M16 x 1.16	5/8"-11UNC x 1.16	