

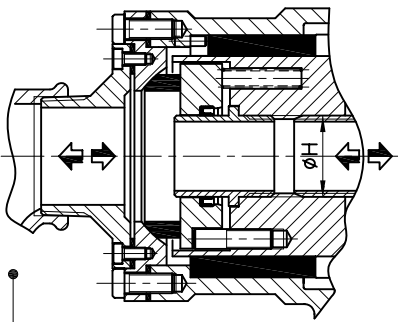


GIUNTI A DUE VIE PER SIFONE ROTANTE DUAL-FLOW UNIONS FOR ROTATING SYPHON

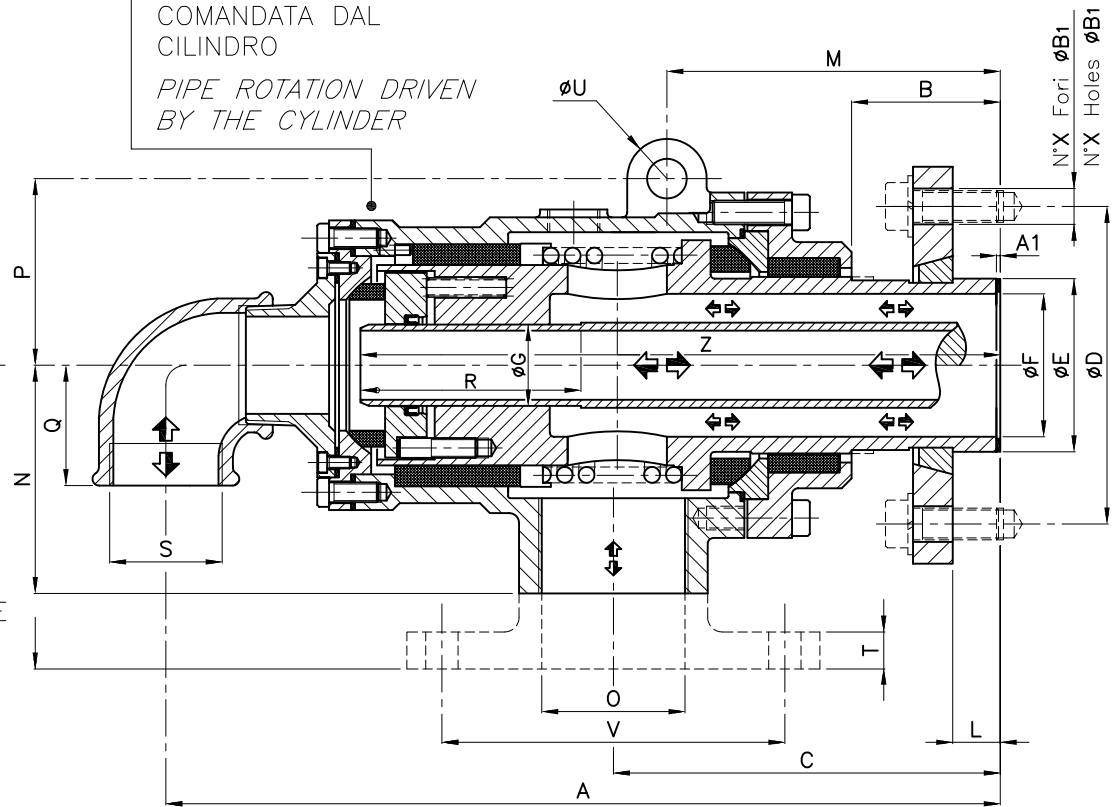
SERIE CB

-  PARTI FISSE
FIXED PARTS
-  PARTI ROTANTI
ROTATING PARTS

ROTAZIONE DEL TUBO
COMANDATA DAL
CILINDRO
*PIPE ROTATION DRIVEN
BY THE CYLINDER*





ROTAZIONE DEL TUBO
COMANDATA DAL ROTORE
DEL GIUNTO
*PIPE ROTATION DRIVEN
BY THE ROTOR OF
THE UNION*

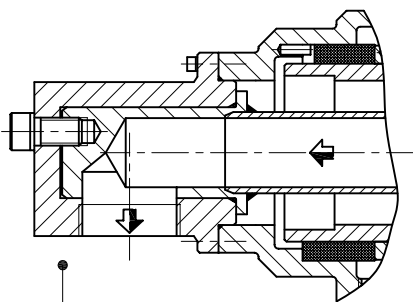


GIUNTI A DUE VIE PER SIFONE FISSO DUAL-FLOW UNIONS FOR FIXED SYPHON

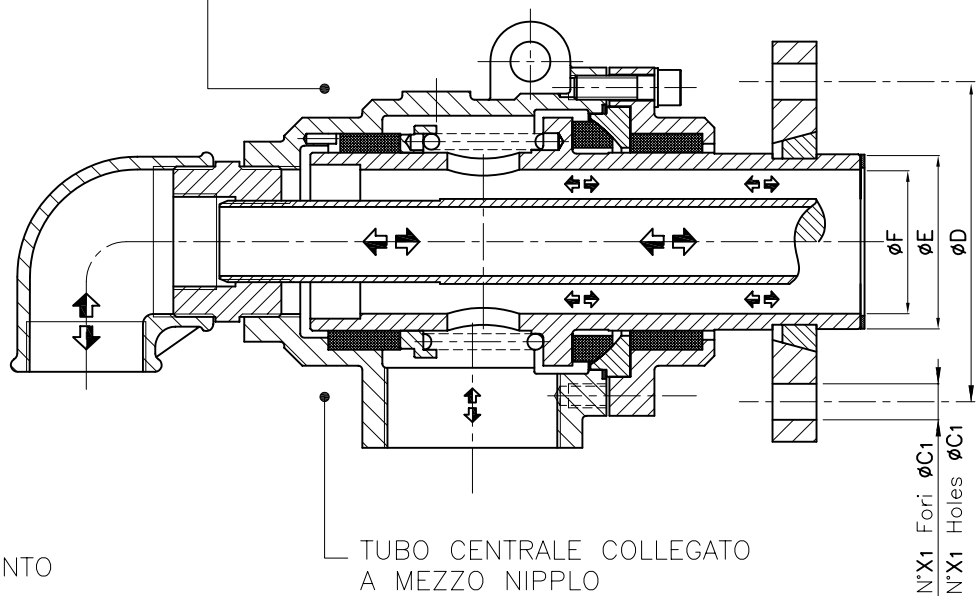
SERIE NF

-  PARTI FISSE
FIXED PARTS
-  PARTI ROTANTI
ROTATING PARTS

PER INGOMBRI RICHIEDERE CATALOGO OMPI-AMBI SERIE "NB"
FOR DIMENSIONS, ASK FOR OMPI-AMBI CATALOGUE SERIES "NB"



TUBO CENTRALE COLLEGATO
A MEZZO RACCORDO
FLANGIATO AL CORPO DEL GIUNTO
*CENTRAL PIPE CONNECTED
TO THE UNION HOUSING
BY FLANGED FITTING*

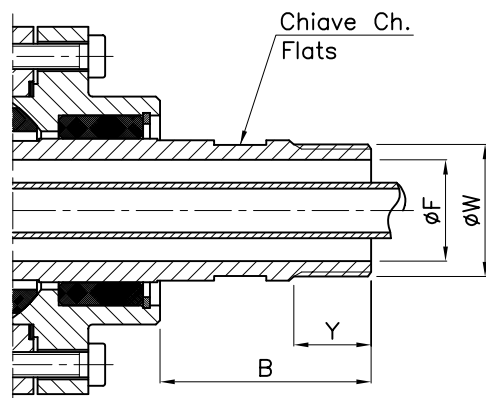


TUBO CENTRALE COLLEGATO
A MEZZO NIPPLIO
FILETTATO AL CORPO DEL GIUNTO
*CENTRAL PIPE CONNECTED
TO THE UNION HOUSING
BY THREADED NIPPLE*

Tolleranza sulla quota H=f8
Tolerance of dimension H=f8

Grandezza Size	A	B	C	D	E	F	G1	G2	G3	H1	H2	H3	K	L	M	X	B1
C_100	222	50	109	85	32,5	24	12	16	●	1/4" BSP	3/8" BSP	●	14	12,5	101	4	14
	8.74	1.96	4.29	3.34	1.27	0.94	0.47	0.62	●	1/4" NPT	3/8" NPT	●	0.55	0.49	3.97	4	0.55
C_125	248	50	116	85	41,3	32	16	20	●	3/8" BSP	1/2" BSP	●	14	14	111	4	14
	9.76	1.96	4.56	3.34	1.62	1.25	0.62	0.78	●	3/8" NPT	1/2" NPT	●	0.55	0.55	4.37	4	0.55
C_150	276	55	130	100	47,6	38	20	26	32,5	1/2" BSP	3/4" BSP	1" BSP	18	14,5	118	4	18
	10.86	2.16	5.11	3.93	1.87	1.49	0.78	1.02	1.27	1/2" NPT	3/4" NPT	1" NPT	0.70	0.57	4.64	4	0.71
C_200	329,5	64	155,5	125	59,1	49	26	32,5	41	3/4" BSP	1" BSP	1 1/4" BSP	18	18	138	4	18
	12.97	2.51	6.12	4.92	2.32	1.92	1.02	1.27	1.61	3/4" NPT	1" NPT	1 1/4" NPT	0.70	0.70	5.43	4	0.71
C_250	380	68	174	125	72,2	62	32,5	41	47	1" BSP	1 1/4" BSP	1 1/2" BSP	18	21	153	4	18
	14.96	2.67	6.85	4.92	2.84	2.44	1.27	1.61	1.85	1" NPT	1 1/4" NPT	1 1/2" NPT	0.70	0.82	6.02	4	0.71
C_300	420	73	195	160	87,3	72	41	47	59	1 1/4" BSP	1 1/2" BSP	2" BSP	18	24	168	8	18
	16.53	2.87	7.67	6.29	3.43	2.83	1.61	1.85	2.32	1 1/4" NPT	1 1/2" NPT	2" NPT	0.70	0.94	6.61	8	0.71
C_350	456	80	200	180	100	85	47	59	75	1 1/2" BSP	2" BSP	2 1/2" BSP	18	17	180	8	18
	17.95	3.14	7.87	7.08	3.93	3.34	1.85	2.32	2.95	1 1/2" NPT	2" NPT	2 1/2" NPT	0.70	0.66	7.08	8	0.71
C_400	472,5	84,5	212,5	180	112,7	95	59	75	●	2" BSP	2 1/2" BSP	●	18	27	190,5	8	18
	18.60	3.32	8.36	7.08	4.43	3.74	2.32	2.95	●	2" NPT	2 1/2" NPT	●	0.70	1.06	7.5	8	0.71
C_500	576	96	252	240	139,2	122	75	87	98	2 1/2" BSP	3" BSP	3 1/2" BSP	22	34	223	8	22
	22.67	3.77	9.92	9.44	5.48	4.80	2.95	3.42	3.86	2 1/2" NPT	3" NPT	3 1/2" NPT	0.87	1.34	8.78	8	0.87
C_600	682,5	103,7	293	270	168	146	85	100	●	3" BSP	3 1/2" BSP	●	22	35	252	8	22
	26.9	4.08	11.53	10.62	6.61	5.75	3.35	3.94	●	3" NPT	3 1/2" NPT	●	0.87	1.38	9.92	8	0.87

Grandezza Size	N	O _{max}	P	Q	R	S _{max}	T	U	V	Z	W	Y	J	A1	Ch	X1	C1
C_100	56,5	3/4" BSP	46,5	29	59	1/2" BSP	●	12	●	175	1" BSP	20	4	1,5	31	4	14
	2.22	3/4" NPT	1.83	1.14	2.32	1/2" NPT	●	0.47	●	0.59	1" NPT	0.78	0.15	0.05	1.22	4	0.55
C_125	73,5	1" BSP	58	32	75	3/4" BSP	●	12	●	190	1 1/4" BSP	20	4	1,5	40	4	14
	2.89	1" NPT	2.28	1.25	2.95	3/4" NPT	●	0.47	●	7.48	1 1/4" NPT	0.78	0.15	0.05	1.57	4	0.55
C_150	76,5	1 1/4" BSP	59	36,5	75	1" BSP	●	14	●	214,5	1 1/2" BSP	25	4	2	46	4	18
	3.01	1 1/4" NPT	2.32	1.43	2.95	1" NPT	●	0.55	●	8.44	1 1/2" NPT	0.98	0.15	0.07	1.81	4	0.71
C_200	91	1 1/2" BSP	72	46	95	1 1/4" BSP	●	14	●	257,5	●	●	4	2	●	4	18
	3.58	1 1/2" NPT	2.83	1.81	3.74	1 1/4" NPT	●	0.55	●	10.13	●	●	0.15	0.07	●	4	0.71
C_250	104	2" BSP	85	57	95	1 1/2" BSP	●	16	●	300	●	●	4	2	●	4	18
	4.09	2" NPT	3.34	2.24	3.74	1 1/2" NPT	●	0.62	●	11.81	●	●	0.15	0.07	●	4	0.71
C_300	115	2" BSP	94	60	112	2" BSP	●	20	●	325	●	●	8	2	●	8	18
	4.52	2" NPT	3.70	2.36	4.40	2" NPT	●	0.78	●	12.79	●	●	0.31	0.07	●	8	0.71
C_350	185	80	103	73	115	2 1/2" BSP	20	24	160	342,5	●	●	8	2	●	8	18
	7.28	3.14	4.05	2.87	4.52	2 1/2" NPT	0.78	0.94	6.29	13.48	●	●	0.31	0.07	●	8	0.71
C_400	195	80	115	78	115	2 1/2" BSP	22	25	160	357	●	●	8	2	●	8	18
	7.68	3.14	4.52	3.07	4.52	2 1/2" NPT	0.86	0.98	6.29	14.05	●	●	0.31	0.07	●	8	0.71
C_500	214,5	95	140	220	144	90	22	30	180	433	●	●	8	2	●	8	22
	8.44	3.74	5.51	8.66	5.67	3.54	0.87	1.18	7.09	17.05	●	●	0.31	0.07	●	8	0.87
C_600	250	125	162	250	180	115,5	24	35	220	504,5	●	●	8	3	●	8	22
	9.84	4.92	6.38	9.84	7.09	4.55	0.94	1.38	8.66	19.86	●	●	0.31	0.12	●	8	0.87



La fornitura standard comprende il rotore filettato (NPT o BSPT) fino alla grandezza "150" inclusa. Grandezze maggiori si forniscono con attacco flangiato.

The standard model is supplied with the threaded (NPT or BSPT) up to the "150" size included. Larger sizes are equipped with flanged connection.