

**SNODO GIREVOLE (per alte pressioni)**  
**SWIVEL UNION (for high pressure)**

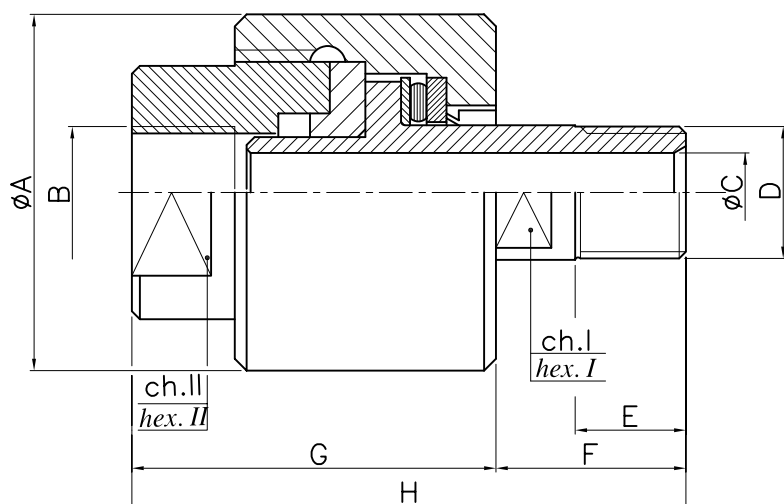
**SERIE SP**

ACQUA • OLIO IDRAULICO  
 WATER • HYDRAULIC OIL



PRESSIONE MAX	450 bar
VELOCITA' MAX	20 G/min
TEMPERATURA MAX	120 °C

MAX FLUID PRESS	450 bar	6400 psi
MAX SPEED	20 G/min	20 rpm
MAX TEMPERATURE	120 °C	250 °F



**CARATTERISTICHE PRINCIPALI**

- Rotore in acciaio inox.
- Versioni speciali a richiesta.
- Corpo in acciaio.
- Manutenzione semplice ed immediata.
- Grandezze da 1/4" a 1 1/2".

**MAIN FEATURES**

- Stainless steel rotor.
- Customized on customer request.
- Steel housing.
- Sizes from 1/4" to 1 1/2".
- Easy and quick maintenance.

TIPO TYPE	A	B	C	D	E	F	G	H	CH. I HEX. I	CH. II HEX. II
SP025	42 1.65	1/4" GAS	7 0.27	1/4"	14 0.55	24 0.94	44 1.73	68 2.67	12	24
SP037	45 1.77	3/8" GAS	10 0.39	3/8"	14 0.55	24 0.94	46 1.81	70 2.75	14	28
SP050	58 2.28	1/2" GAS	12 0.47	1/2"	19 0.74	31 1.22	51 2.00	82 3.22	19	38
SP075	64 2.51	3/4" GAS	18 0.70	3/4"	20 0.78	33 1.29	57 2.24	90 3.54	25	42
SP100	68 2.67	1" GAS	23 0.90	1"	23 0.90	38 1.49	62 2.44	100 3.93	30	48
SP125	82 3.22	1 1/4" GAS	30 1.18	1 1/4"	24 2.36	41 1.61	67 2.63	108 4.25	40	58
SP150	88 3.46	1 1/2" GAS	38 1.49	1 1/2"	25 1.69	43 1.69	71 2.79	114 4.48	45	62